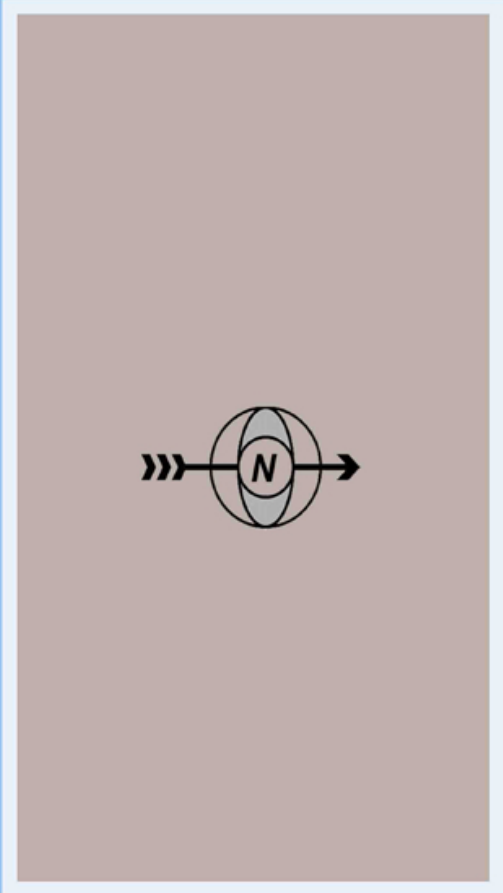
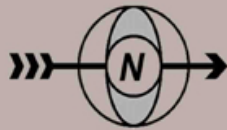


AFFORDABLE QUALITY HOMES WITH BEST AMENITIES FROM ESSEN BUILDERS

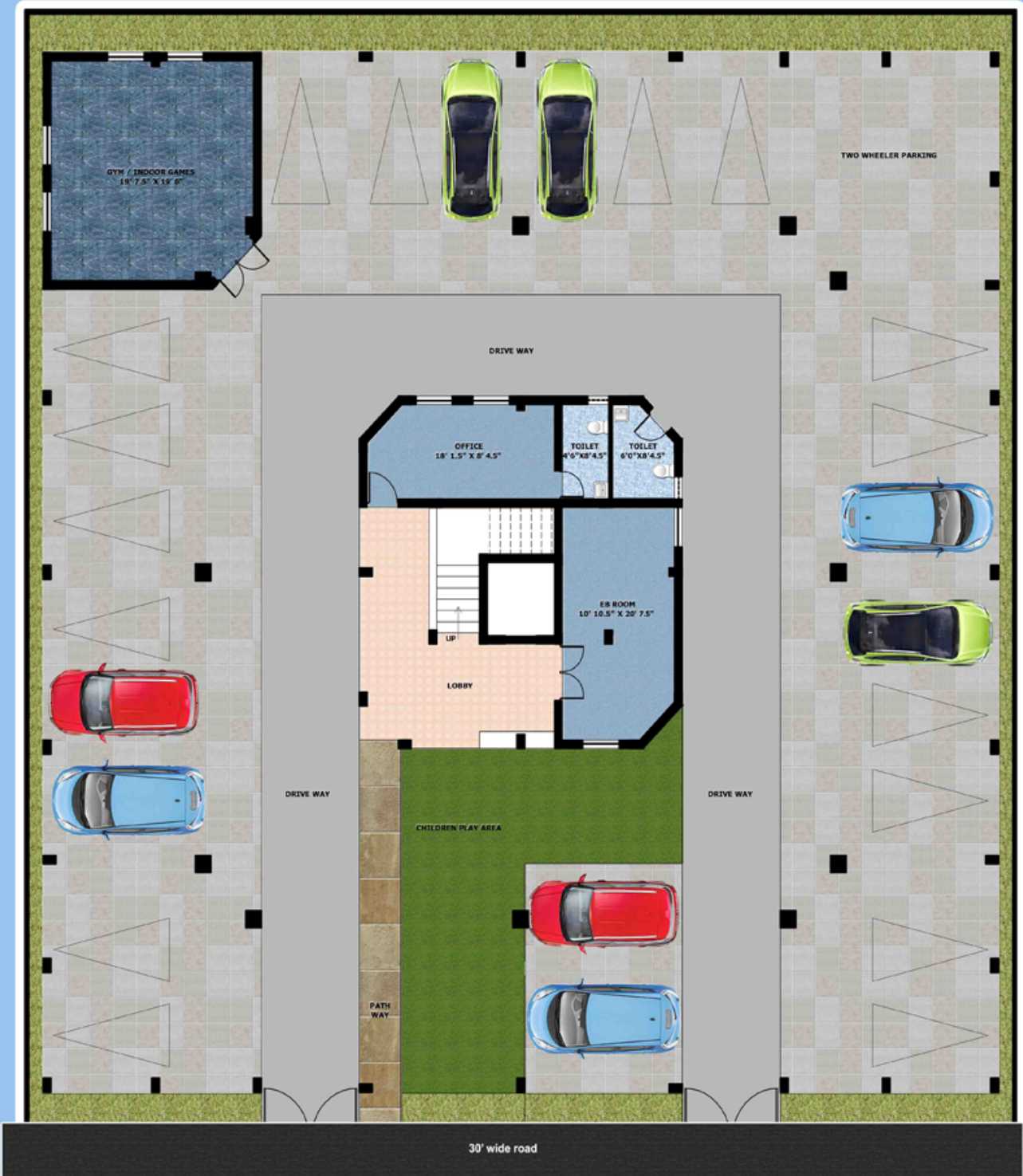


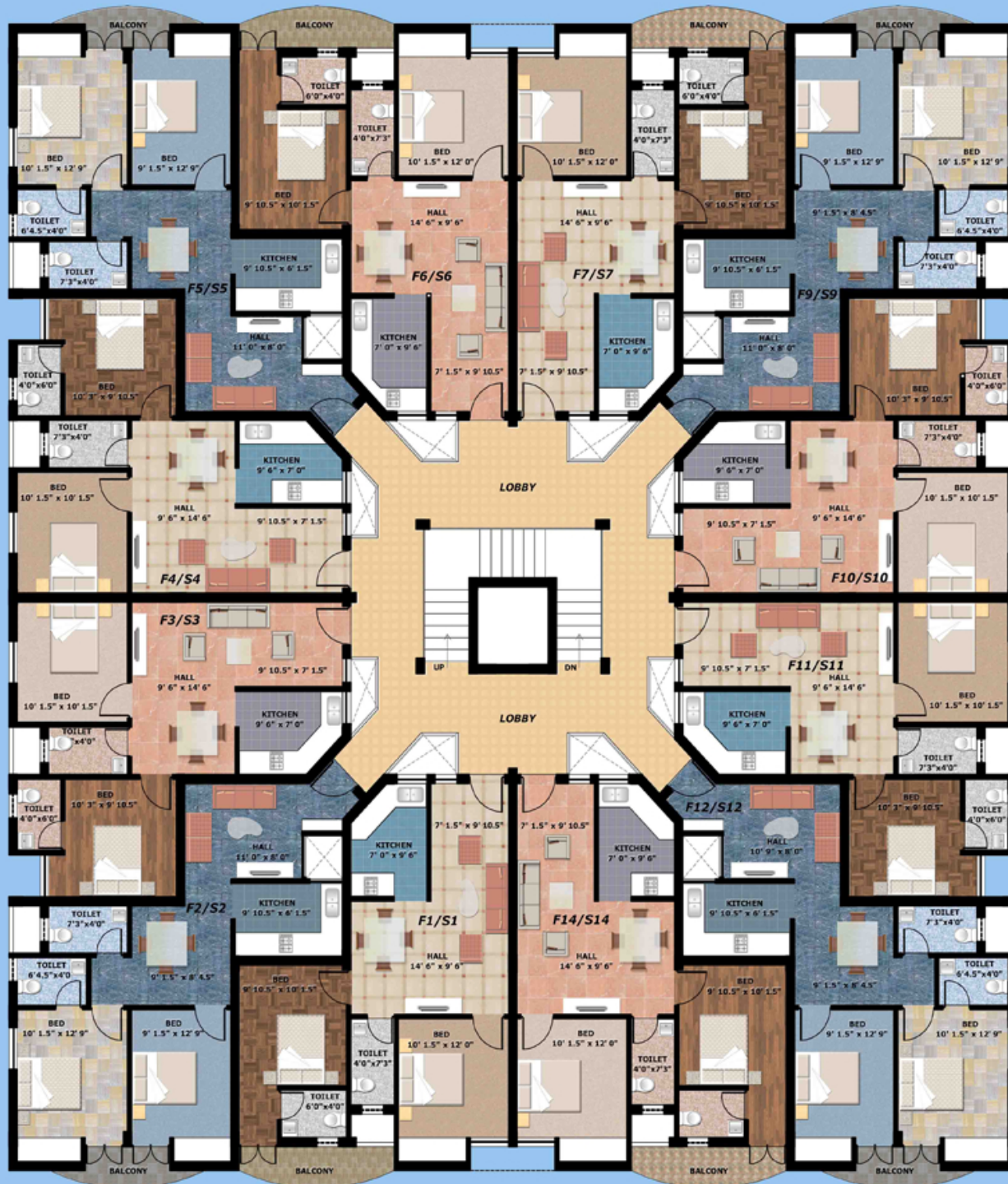
*Casa La Paz
Apartments*

ESSEN BUILDERS
Plot 114, CITY PARK LAYOUT,
Near Siruseri SIPCOT IT PARK,
Egattur, Chennai - 600 130
Mobile: +91 99529 66595
E-Mail: jeyapal.k@gmail.com



GROUND FLOOR PLAN





AREA OF UNITS IN s.ft.

F1,	S1	- 855
F2,	S2	- 860
F3,	S3	- 775
F4,	S4	- 775
F5,	S5	- 860
F6,	S6	- 855
F7,	S7	- 855
F9,	S9	- 860
F10,	S10	- 775
F11,	S11	- 775
F12,	S12	- 860
F14,	S14	- 855

FIRST AND SECOND FLOOR PLAN



LOCATION MAP
(NOT TO SCALE)

SPECIFICATIONS:

Structure ■ Designed for seismic load

RCC framed structure with independent column footing

Walls ■ Brick / Concrete hollow blocks wall & plastered with cement mortar

Flooring ■ Ceramic/vitrified tiles for floors and skirting, Anti-skid ceramic flooring for toilets

Dado ■ Glazed tiles dado up to lintel level for toilets & 2' height above kitchen platform

Kitchen ■ Granite platform 2'0" width, stainless steel sink

Door ■ Entrance door with teak wood decorative panel door and varnished
Other doors with paddak/kongu wooden frames and factory made flush shutters
Toilets with PVC door

Window ■ Paddak/kongu framed with glazed shutters

Painting ■ Inside wall with cement based putty and interior emulsion paint
External painting with emulsion, Doors and windows with enamel paint

Toilet ■ Parryware/Hindware wash basin, water closet with flushing cistern
All internal plumbing with PVC concealed, All taps/showers with approved quality

Electrical ■ Three phase MCB distribution supply with sufficient points in rooms
PVC concealed wiring for switches telephones, TV
Provision of geyser point in toilets & air conditioning point in bedrooms
Switches of approved quality

Amenities provided at additional payment

Kitchen shelves, open cupboards in bed, electrical points, other than specified materials/fittings.

OFFICE ADDRESS

ESSEN BUILDERS
No 26, Saraswathi Street,
Mahalingapuram, Nungambakkam,
Chennai 600 034.
Mobile: 99529 66595